

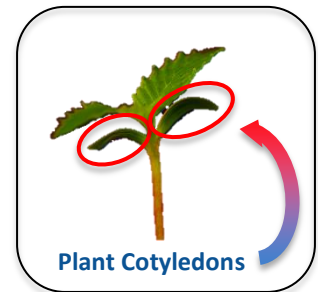
## Plant DNA Sample Collection Instructions

### Before Collecting

- Ensure plants are watered and properly hydrated 24 - 48 hours before collecting samples.
- Label each of your plants with a unique ID.
- Write the name of each plant on the front of each sample envelope.
- Wipe down tools with alcohol before and after each plant to avoid cross contamination.
- Do NOT use a dead or dry leaf - it won't work. Please contact us if your cotyledons have already dried or fallen off.
- Once you pluck a leaf you must crush it onto the kit within a few minutes to prevent the leaf drying out.

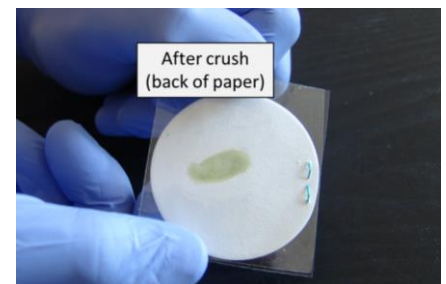
### Collection Tools Needed

- Tweezers or forceps
- Blunt object for crushing samples (e.g. a marker, coin or key)
- Alcohol for cleaning tweezers (e.g. isopropyl)
- Nitrile or Latex gloves (recommended)



### Collection Steps

1. Wash your hands and put on gloves to reduce contamination.
2. Remove the contents of the envelope.
3. Cut or pluck a cotyledon from your plant and place it on top of the filter paper.
4. Crush the sample between the plastic film\* and the filter paper using a blunt object.
  - a. Make sure the leaf fluid absorbs through both sides of the round filter paper.
5. Lift the plastic film and discard the remaining plant material. Gently scrape off the leaf remnants. Only keep what remains absorbed into the filter paper.
6. Place the filter paper containing your sample back inside corresponding envelope.
  - a. Close the envelope flap but do not seal envelope.
7. Wipe clean your tweezers using alcohol to prevent cross-contamination.
8. Continue to next sample, repeating steps 2-8 for each sample.



### Submit Samples

\*The "plastic" film is actually a 100% biodegradable material.

Contact us at **(805) 253-2384** to schedule a drop-off or ship your samples and contact info via FedEx, UPS or DHL to:

**Kit Returns**  
**5662 Calle Real #243**  
**Goleta, CA 93117**