

## Plant DNA Sample Collection Instructions

### Before Collecting

---

- Ensure plants are watered and properly hydrated 24-48 hours before collecting sample.
  - **DO NOT** use a dead or dry leaf. Our kits will not properly absorb DNA from dead/dry leaves.
- Label each of your plants with a unique ID.
  - Write the name and/or ID of each plant on the front of each sample envelope.
- Wipe down tools with alcohol before and after each plant to avoid cross contamination.
- Once you pluck a leaf, you must crush it onto the paper within a few minutes to prevent the leaf from drying.

### Materials Required

---

- Tweezers or forceps and a small pair of scissors
- Blunt object for crushing samples (e.g. a marker, coin or key)
- Alcohol for cleaning tweezers (e.g. isopropyl)
- Nitrile or Latex gloves (recommended)

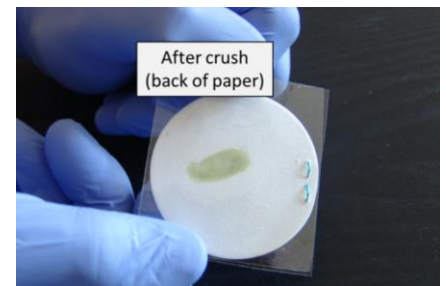
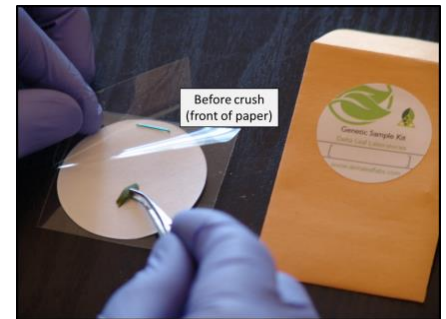


Plant Cotyledons

### Collection Steps

---

1. Wash your hands and put on gloves to reduce contamination.
2. Remove the contents of the envelope.
3. Cut or pluck a cotyledon from your plant and place it on top of the paper.
4. Crush the sample between the plastic\* and the paper using a blunt object.
  - a. **Make sure the leaf fluid absorbs through both sides of the paper.**
5. Lift the plastic and discard the remaining plant material. Gently scrape off the leaf remnants. Only keep what remains absorbed into the paper.
6. Place your collected sample inside the corresponding envelope. Close the envelope flap, but, **please do not seal the envelope.**
7. Clean your tools and gloves using alcohol to prevent cross-contamination.
8. Continue to next sample, repeating steps 2-8 for each sample.



### Submit Samples

---

\*The “plastic” film is actually a 100% biodegradable material.

Contact us at **(805) 253-2384** to schedule a drop-off or ship your samples and contact info via FedEx, UPS or DHL to:

**Kit Returns**  
**5662 Calle Real #243**  
**Goleta, CA 93117**